

VOL - 5 ISSUE - 1

RNI - MAHENG / 2021 / 8048

# TYCOONS

CONSTRUCTION & ARCHITECTURE

Published by  
I WORLD MEDIA PVT. LTD

June - July 2025

Price - 100/-

www.iworldmedia21.com



Prem Shanker



Balvinder Ahuja



Saikrishna Musunuru



Karan Shah



Sunny Surlaker



Vikas Rathod



Rahul Bahl



Rajesh Bhandari



Vijaynath Shetty



Mahavir Prasad Jain



Jerome Charles



Ashok Chhabria



Pawan Chhabria



Akhilesh Chitlangia



Gurdeep Singh Juneja



Kiran Shah



Raghuveer Veeramachaneni



Sunil Kumar Agarwal



Sharan Babani



Vidhant Monga



## Inspiring Industry Experts



Satguru's Rendezvous | Mumbai

## Satguru Developers Unveil New Luxury Condominium that Makes a Bold Architectural Statement in Mumbai's Towering Skyline

Satguru's Rendezvous asserts a dominant presence in Mumbai's ever-evolving skyline, a city shaped by stringent building codes and regulations. Rising nearly 300 feet, the 22-storey luxury condominium features a tiered profile and pink facade, a bold departure from the sea of anonymous grey towers dotting the city. The project reimagines a former residential tower by extending its height and modulating its form. These interventions impart a distinctive identity to the structure, transforming it into a prominent landmark that soars above the streets of Bandra.

The project's brief was to redefine the concept of luxury living in the context of Mumbai's bustling urban landscape. At its core, the design aims to capture the spirit of the city—at once vibrant, eclectic, and full of surprises.



**Sharan Babani**

*Director of Design*

*Development, Sales & Acquisitions  
Satguru Builders*

The tower's form is derived from a harmonious arrangement of stacked volumes. A three-storey podium houses parking and amenities such as a fitness centre, swimming pool, and flexible

open spaces for various functions. It features lush landscaping, walking tracks, and designated spaces for recreation and community, offering a tranquil oasis in the heart of the city. The curved form of the base also updates the connection to the street, creating a sense of gentle movement and visual dynamism.

The residential blocks rest above the podium. Existing housing society members occupy the first eight storeys, while the upper levels house new luxurious four-bedroom units with unobstructed views of the city and the Arabian Sea. The building is capped by a sunset deck with sweeping vistas, where residents can unwind while taking in the splendour of the setting sun.

Greenery is integral to the design scheme—tropical plants enclose the



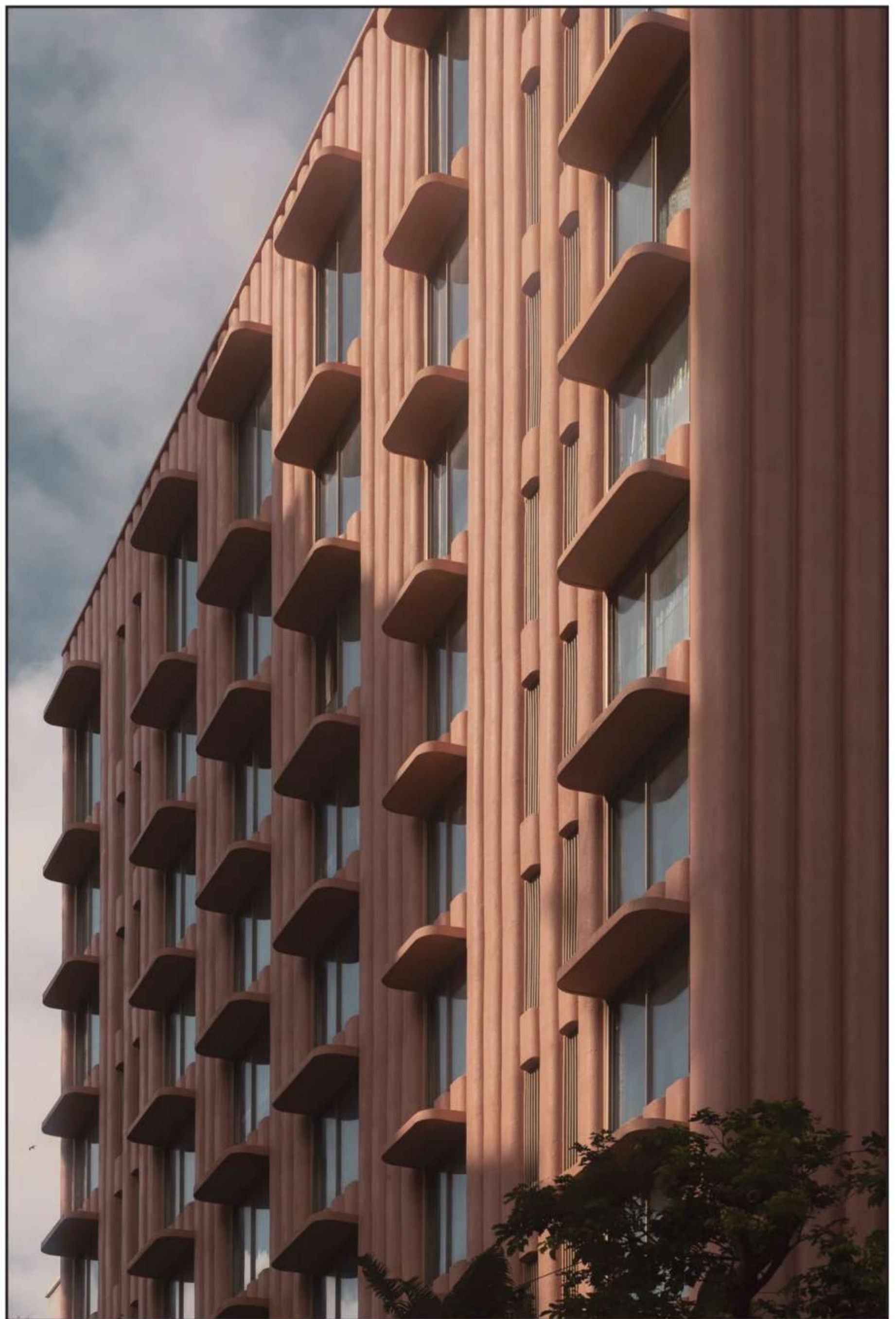
wraparound walking tracks and recreational spaces on the podium level, while the terraces, which serve as social gathering points, feature herb gardens, promoting a direct connection to nature and supporting native biodiversity.

Drawing inspiration from India's national flower, the lotus, the concrete facade is rendered in a characteristic pink hue, serving as a cultural and visual gesture. The building's formal composition is expressed with rich artistic intent. Key elements such as the terraces and overhangs feature soft, sweeping curves to imbue the building with a playful, sculptural quality. The rhythmic articulation of the flutings further amplifies this organic form, contributing to a cohesive architectural language that stands in striking contrast to its neighbours. As light shifts across the surface, the building's appearance alternates between apparent solidity and a more subtle, lighter expression, maintaining visual interest throughout the day.

The interiors for the residential and amenity areas are designed with a focus on refined simplicity, balancing elegance and functionality through high-quality finishes, a neutral palette, and an understated aesthetic that enables residents to shape the space as their own.

Rendezvous seeks to break free from the typical luxury residential monolith that dominates much of India's urban landscape. Paying homage to Mumbai, and the neighbourhood of Bandra in particular, where heritage and modernity coexist in perfect harmony, it aims to champion a truly Indian architectural identity, one that is rooted in tradition yet responsive to the evolving architectural discourse in the country.

**Satguru Builders** Mumbai, Founded in 1987 by Mr. Mohan Babani, Satguru Builders is a real estate firm renowned for its innovative spirit and design excellence. Since its founding, the firm has shaped Mumbai's skyline with many pioneering residential projects.



Satguru Builders maintains a prominent presence in Mumbai, with its headquarters in Bandra housed within a landmark building designed by Hafeez Contractor. This project marked a significant milestone as India's first glass façade building, establishing Satguru Builders as a trailblazer in modern architectural design. The firm further solidified its leadership by being the first to introduce curtain wall systems in Mumbai's high-rise buildings and by integrating parametric design principles into real estate construction, setting new standards in the industry.

The firm's commitment to high-quality architecture and cutting-edge

design ensures its buildings remain signature landmarks that set benchmarks in Mumbai's real estate landscape. Having carved their niche as architect-developers, they combine bold architectural visions with sophisticated, future-forward interiors that shape the future of urban living.

Satguru Builders nurtures an in-house team with a wealth of experience across acquisitions, design, development, construction, leasing, and asset management. Every aspect, from site selection to project completion, is meticulously managed to ensure superior quality and lasting value.

